

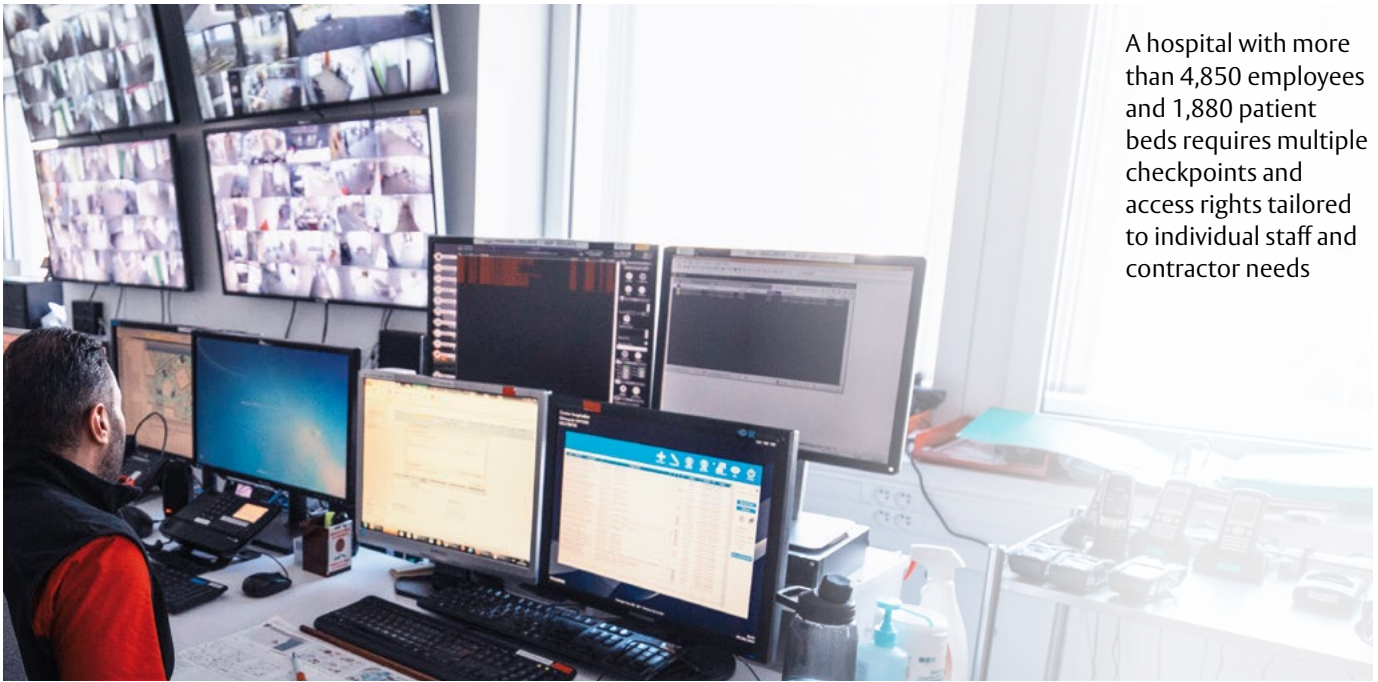


URGENCES

Wireless Aperio® locks
complement wired locking to
secure a large French hospital

ASSA ABLOY
Opening Solutions

Experience a safer
and more open world



A hospital with more than 4,850 employees and 1,880 patient beds requires multiple checkpoints and access rights tailored to individual staff and contractor needs



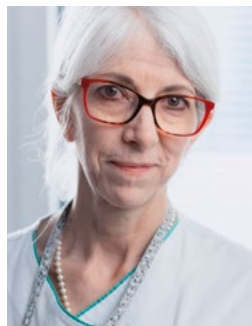
Company:
Centre Hospitalier Métropole Savoie
(www.ch-metropole-savoie.fr)
Segment: Hospital/medical
Location: Chambéry, France
Access control system/integrator:
ARD (www.controle-acces.fr)

Aperio devices installed:
1,300 Aperio readers and
228 Aperio communications hubs
RFID technology: Mifare
Year of installation: 2015 to 2019

Challenge

Meeting the access control needs in hospitals

Centre Hospitalier Métropole Savoie (CHMS) is a large new hospital built to serve the Alpine communities of Haute Savoie. The hospital employs 4,850 people and has 1,850 patient beds. As at all health facilities, security for this new hospital presents a complex challenge. It requires multiple checkpoints and access rights tailored to individual staff and contractor needs.



“Having just a single badge — and not having to carry around heavy keys — has been a major requirement for us.”

Béatrice Dequidt,
Health Executive, Centre Hospitalier Métropole Savoie

Key requirements for commissioning the new hospital's access control system included:

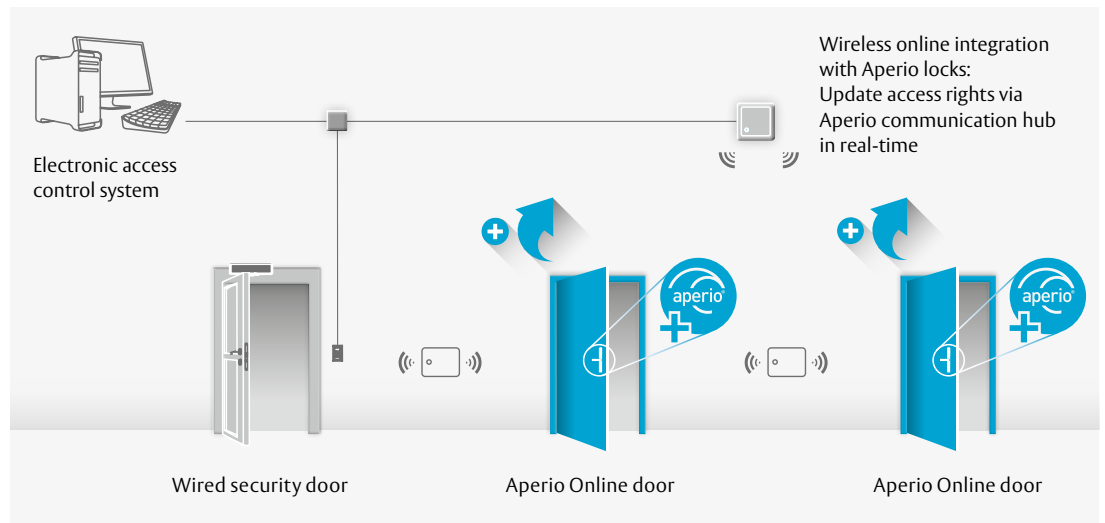
- Access control devices to fit and manage all doors at multiple sites, including secure areas like the pharmacy
- A technology which removes the need for staff to carry heavy key bunches or hunt relevant keys
- A management interface enabling security teams to administer and maintain access control autonomously
- Real-time control, so managers can respond proactively including by opening/closing doors remotely
- System compatibility with the government's electronic Health Professional Card (CPS)

Solution

Aperio and ARD integrate HR and access control functions seamlessly

1,300

Aperio secured doors now can be managed from a single system



To meet their security challenges, managers selected Aperio locking technology integrated online with an ARD access management system. Because Aperio locks are wireless, the hospital has introduced many more layers of security and secure doors without incurring excessive installation or operating costs, including for sensitive offices and drug stores where real-time control is needed.

Aperio battery-powered electronic devices integrate natively with the centralised access system, so CHMS's wired and wireless access points are managed together, with real-time management logs, remote door opening and free time slot management. Communication between Aperio lock, hub and system benefits from 128-bit AES encryption.

"When there are physical constraints, or when the environment does not allow for wiring, the autonomous Aperio solution allows doors to be equipped [and] user and badge-holder import to be automated," explains Aurélien De Riols, ARD's Sales regional Director.

"This solution's advantage is it represents a single site from an authorisation management and systems perspective."

"We have implemented internal HR management procedures, creating badges that are automatically integrated into ARD's operating software," adds Alain Gestin, CHMS's IT Systems Architect. For every site user, the advantages of carrying a single badge — instead of multiple keys — are clear.



Learn more:

campaigns.assaabloyopeningsolutions.eu/aperio

The ASSA ABLOY Group is the global leader in access solutions. Every day, we help billions of people experience a more open world.

ASSA ABLOY Opening Solutions leads the development within door openings and products for access solutions in homes, businesses and institutions. Our offering includes doors, door and window hardware, locks, access control and service.

ASSA ABLOY
Opening Solutions

ASSA ABLOY
Opening Solutions EMEA
Dukes Court
Duke Street
Woking GU21 5BH
UK